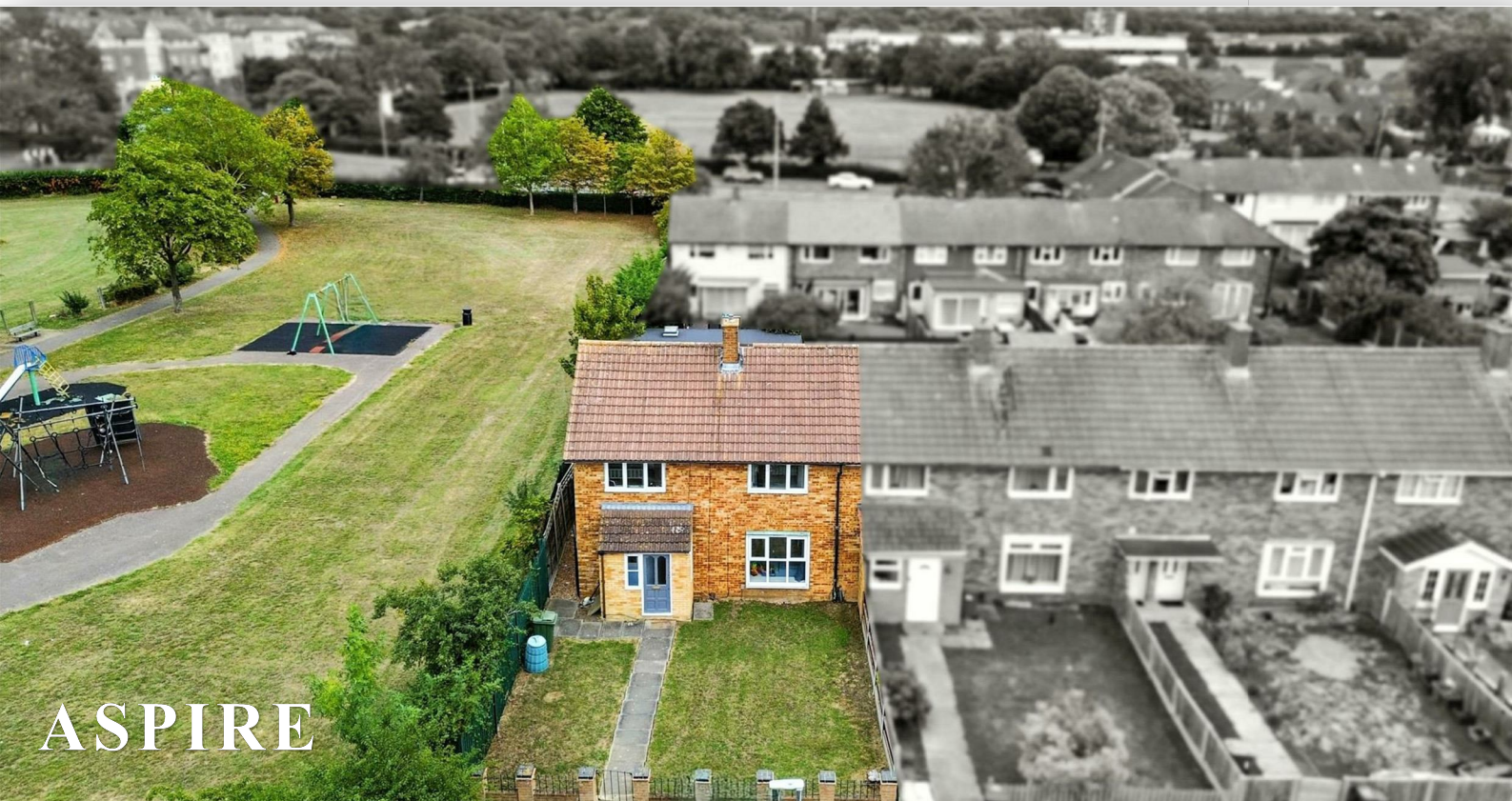


**To arrange a viewing contact us  
today on 01268 777400**



## Little Chittock, Basildon Offers in the region of £375,000

Aspire Estate Agents Basildon are delighted to present this exceptional 3/4 -bedroom end-of-terrace home, complete with a luxurious outbuilding, offering versatile additional space.

Inside the main house, there are three well-proportioned double bedrooms, a newly fitted kitchen, a modern bathroom, and a convenient downstairs WC. The living and dining space is bright and spacious, featuring a charming fireplace and large windows that allow natural light to flood the room. The property has been refurbished throughout to a high standard, providing a stylish and comfortable family home ready to move straight into.

The downstairs accommodation comprises a welcoming entrance hall leading through to the lounge/diner and kitchen. The kitchen is fitted with a range of wall-mounted and base units, an integrated oven and hob, and space for essential appliances. A downstairs shower room offers practical additional facilities, while the separate WC adds further convenience.

Upstairs, the three double bedrooms are all generously sized, with the principal bedroom benefiting from a built-in cupboard. The family bathroom features a panelled bath with shower attachment, a vanity wash hand basin, and a separate shower cubicle, all finished to a high standard.

Externally, the property occupies a very large plot with shared parking and boasts a substantial rear garden incorporating a patio, lawn, and decked seating area, along with gated side access. The outbuilding provides excellent additional space, ideal for a home office, gym, studio, or guest accommodation (subject to use). The front garden is laid to lawn with established shrub borders and a brick wall surround.

Ideally located within walking distance of Mopsies Park, this impressive home offers an excellent balance of space, comfort, and convenience.

[www.aspireestateagents.co.uk](http://www.aspireestateagents.co.uk)

Entrance

Downstairs Shower Room

Lounge/Diner: 19'5" x 13'10" (5.92m x 4.22m)

Kitchen: 13'5" x 10'2" (4.09m x 3.10m)

First Floor Landing

Bedroom One: 13'8" (4.17m)

Bedroom Two: 11'8" x 10'0" (3.56m x 3.05m)

Bedroom Three: 10'5" x 7'5" (3.18m x 2.26m)

Bathroom

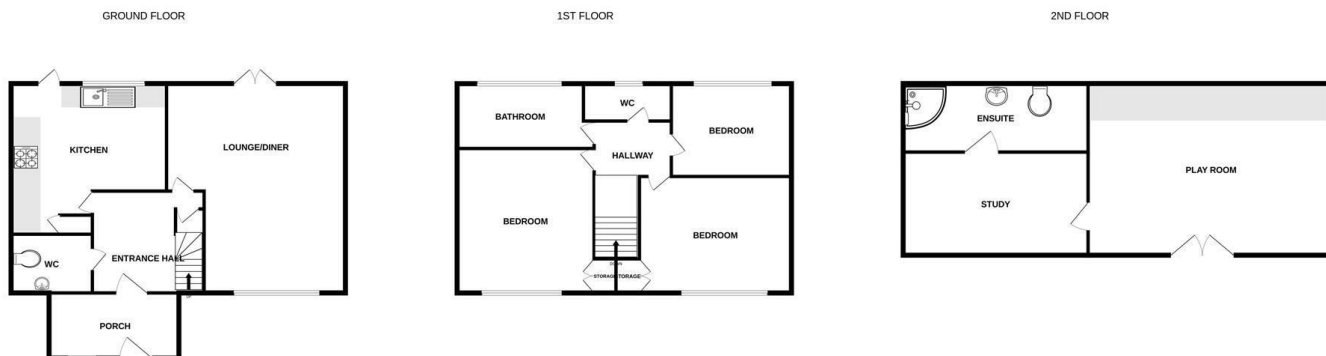
Separate WC

Rear Garden

Front Garden

Outbuilding: L 14'8" x W 16'8" (4.48m x 5.08m)

Office: L 12'11" x W 8'8" (3.95m x 2.64m)



Whilst every attempt has been made to ensure the accuracy of the floorplan contained here, measurements of doors, windows, rooms and any other items are approximate and no responsibility is taken for any error, omission or mis-statement. This plan is for illustrative purposes only and should be used as such by any prospective purchaser. The services, systems and appliances shown have not been tested and no guarantee as to their operability or efficiency can be given.  
Made with Metropix ©2026

Energy Efficiency Rating	
	Current Potential
Very energy efficient - lower running costs	
(92 plus) A	
(81-91) B	
(69-80) C	72 78
(55-68) D	
(39-54) E	
(21-38) F	
(1-20) G	
Not energy efficient - higher running costs	
England & Wales EU Directive 2002/91/EC	
Environmental Impact (CO <sub>2</sub> ) Rating	
	Current Potential
Very environmentally friendly - lower CO <sub>2</sub> emissions	
(92 plus) A	
(81-91) B	
(69-80) C	
(55-68) D	
(39-54) E	
(21-38) F	
(1-20) G	
Not environmentally friendly - higher CO <sub>2</sub> emissions	
England & Wales EU Directive 2002/91/EC	



Under the Property Misdescriptions Act 1991 we make every effort to ensure our sales details are accurate but they are a general outline and do not constitute any part of an offer or contract. Any services, equipment and fittings have not been tested and no warranty can be given as to their condition. We strongly recommend that all the information provided be verified by your advisors and in particular, measurements required for a specific purpose such as fitted furniture or carpets. Please tell us if you have any problems and members of our branches will help either over the phone or in person. A copy of our complaints procedure is available on request. The details are issued on the strict understanding that any negotiations in respect of the property named herein are conducted through Aspire Estate Agents.